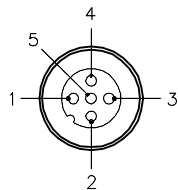


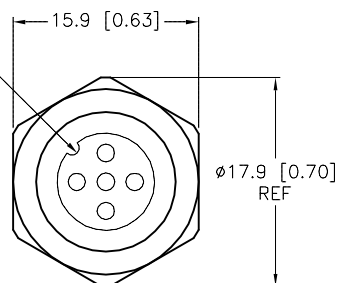
MALE END VIEW



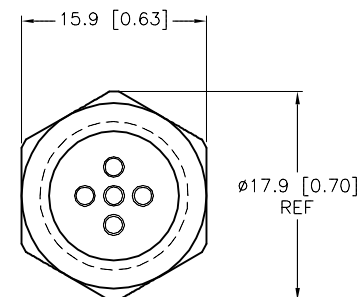
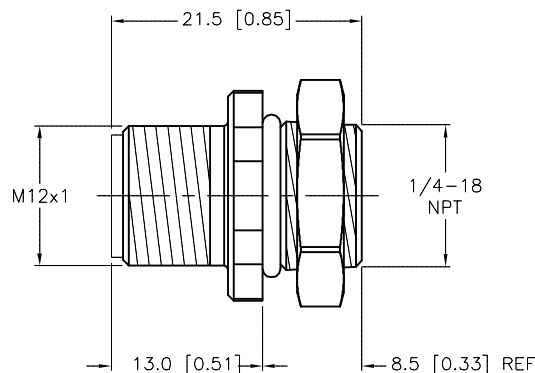
SPECIFICATIONS

CONTACT CARRIER MATERIAL	NYLON OR TPU
CONTACT MATERIAL/PLATING	BRASS/GOLD
HOUSING/LOCKNUT MATERIAL/PLATING	BRASS/NICKEL
O-RING MATERIAL	NITRILE
RATED CURRENT [A]	4.0 A
RATED VOLTAGE [V]	250 V
TERMINATION TYPE	SOLDER CUPS
MAX. WIRE SIZE	20 AWG
TEMPERATURE RATING	-40°C to +105°C (-40°F to +221°F)
PROTECTION CLASS	MEETS NEMA 1,3,4,6P AND IEC IP68

KEYWAY ORIENTATION
MAY VARY



END VIEW
LOCKNUT REMOVED



SOURCE DRAWING - FOR REFERENCE ONLY

RELATED DOCUMENTS 1. 2. 3. 4.	3RD ANGLE PROJECTION 	THIS DRAWING IS CONFIDENTIAL AND THE PROPERTY OF TURCK INC. USE OF THIS DOCUMENT WITHOUT WRITTEN PERMISSION IS PROHIBITED.		3000 CAMPUS DRIVE MINNEAPOLIS, MN 55441 1-800-544-7769 (763) 553-7300 (763) 553-0708 fax turck.com	
		DRFT	*CK	DATE	10/28/10
		APVD		SCALE	1=.7
		UNIT OF MEASUREMENT		DESCRIPTION	
MATERIAL	ALL DIMENSIONS DISPLAYED ON THIS DRAWING ARE FOR REFERENCE ONLY	MILLIMETER [INCH]		FS 4.5/18.25	
FINISH		CONTACT TURCK FOR MORE INFORMATION		IDENTIFICATION NO.	
SEE SPECIFICATIONS		DO NOT SCALE THIS DRAWING		U1115-3	
SEE SPECIFICATIONS				REV	
B		DRAWING PROCESSED AS PART OF ECO 33971		CBM	
REV		DESCRIPTION		BY	
				DATE	
				ECO NO.	
				SHEET 1 OF 1	